

# Preliminary Design and Class Environmental Assessment

## Wolfe Island Ferry and Docking Improvements

**Council Presentation:**  
**Township of Frontenac Islands**



Ministry of Transportation  
Eastern Region  
March 21, 2016



Photo by Wayne Heiber

# Purpose of Project

- Project background;
- Review study approach;
  - Problems and opportunities
  - Range and type of alternatives
  - Evaluation process
- Discuss opportunities for input;

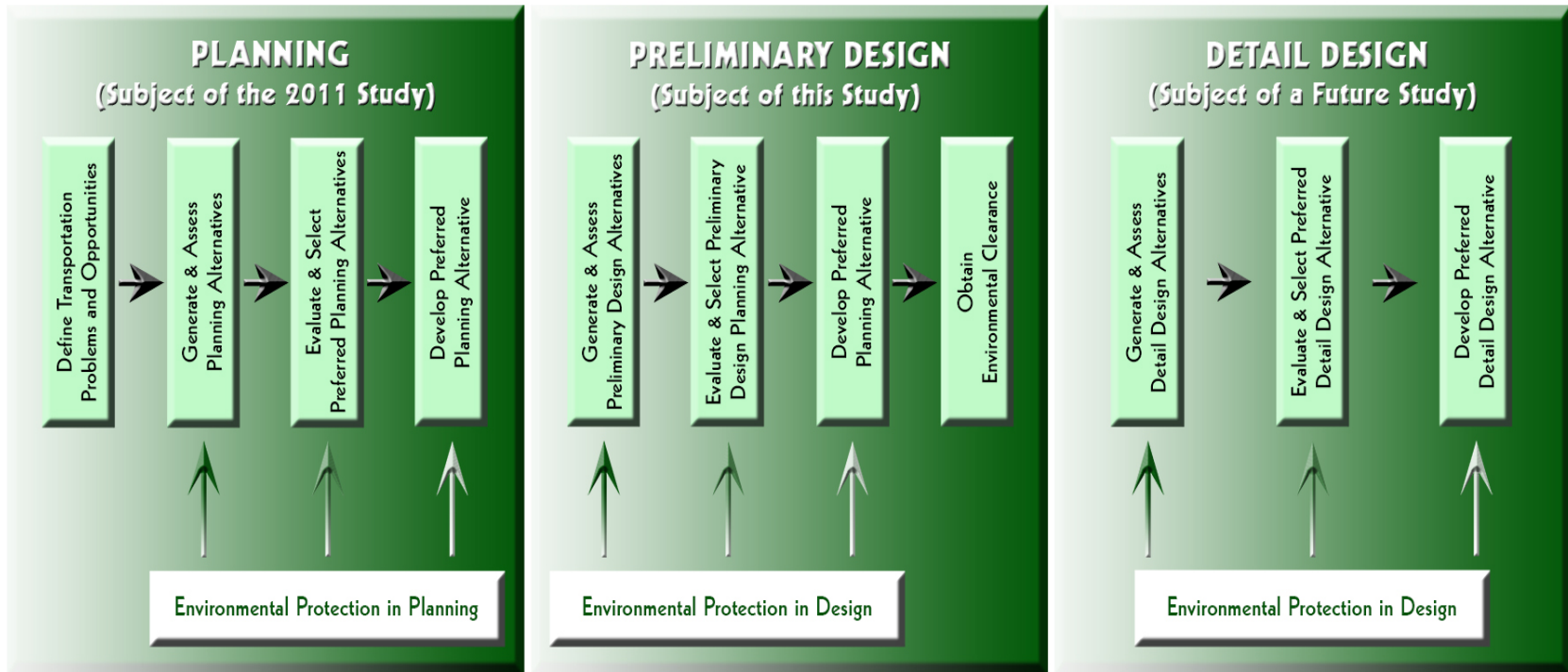
# Project Background

- Planning – completed during 2011 Planning Study
- Preliminary Design – Production of Transportation Environmental Study Report (*current stage*)
- Detail Design – Production of Design and Construction Report (*next stage*)
- Implementation and Construction

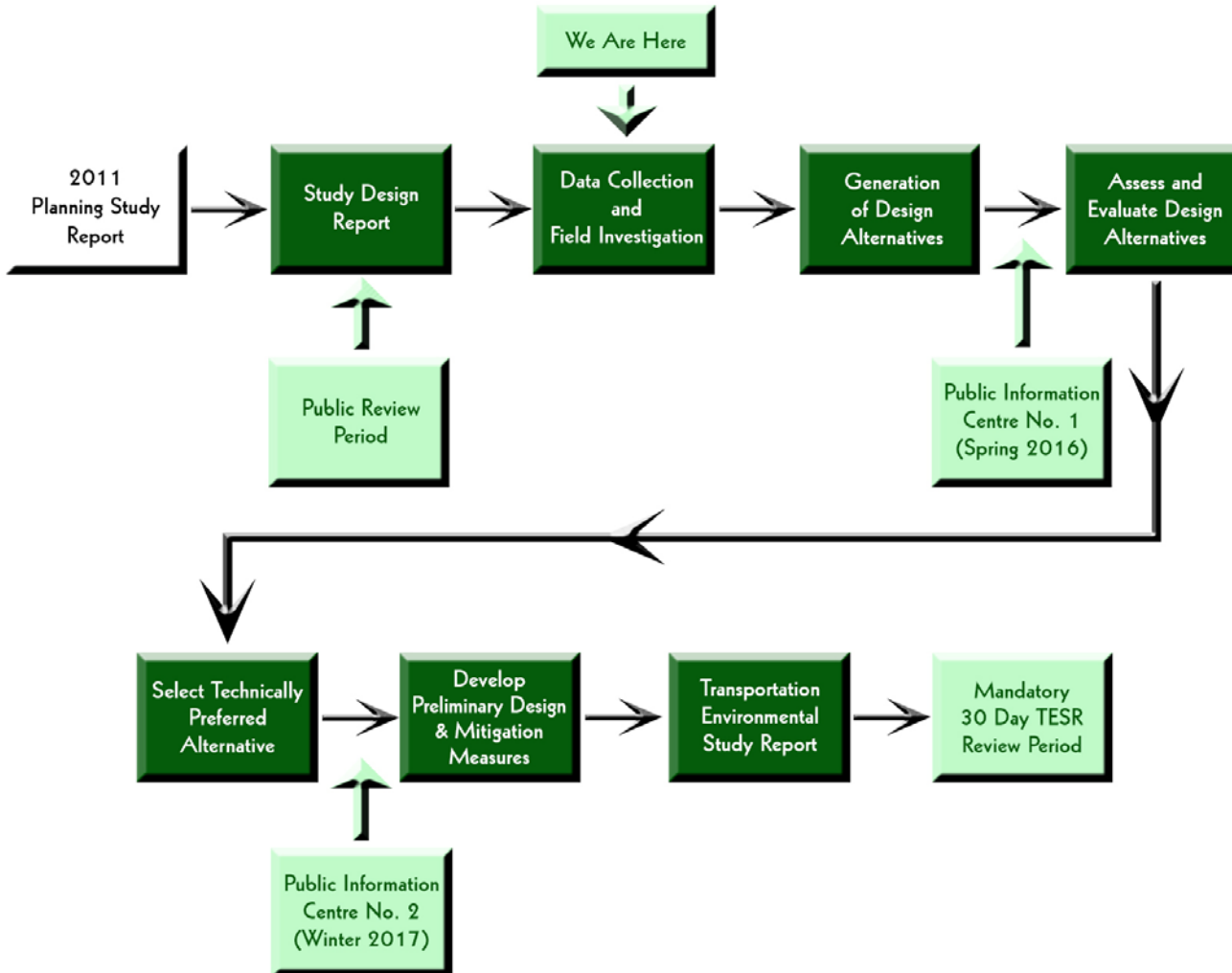


# MTO Class EA Process

## ENVIRONMENTAL ASSESSMENT (EA) PROCESS



# Project Stages

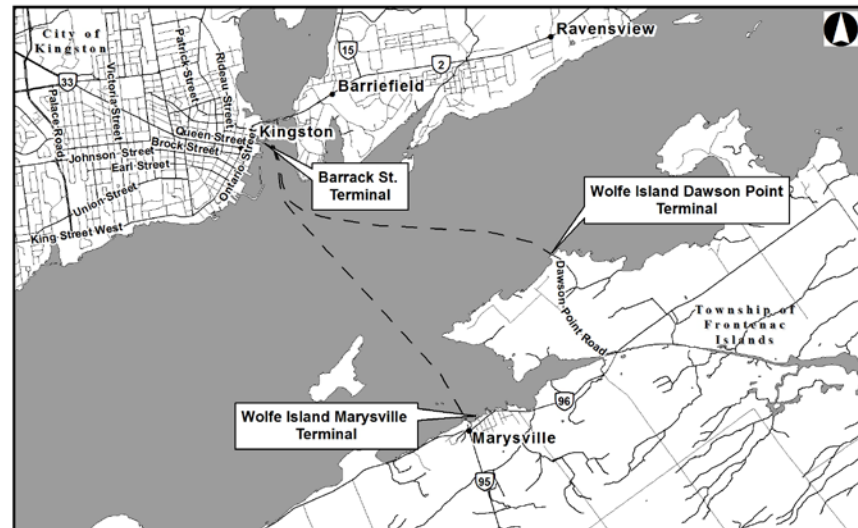


# Problems with Existing Operations

- Ferry operating at or near capacity:
  - Weekdays, during rush hours in the winter season
  - For an extended peak period (rush hour) and for much of the day on the weekends in the shoulder seasons (Apr./May, Oct./Nov.)
  - For most of the day during the summer
- Estimated that peak demand could climb to 128-151 vehicles per hour by 2029

# Project Purpose

- Address short/long term needs
  - Building on the 2011 Planning Study
- Identify environmental constraints
- Generate and evaluate Alternative Designs
- Select a Technically Preferred Alternative
- Identify appropriate environmental mitigation measures



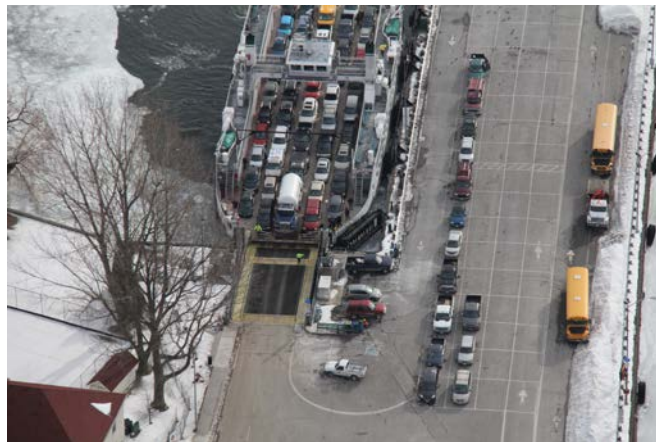
# Alternatives to be Considered

## Planning Alternatives (2011 Study)

The functionally different ways to meet the project need and achieve the project purpose. (ferry vs. fixed link)

## Preliminary Design Alternatives (subject of this study)

Various technically and economically feasible ways the project can be implemented or carried out. (additional ferry/increased ferry capacity, improvements to terminals, etc.)





# 2011 Planning Study Recommendations (Planning Alternatives)

- The 2011 Planning Study evaluated many alternatives for a 20-year planning horizon
- It was recommended that in the 20-year planning horizon the best alternative was **dual-vessel ferry** operations
- Provide improvements to:
  - Marshalling and docking facilities;
  - Intersection improvements at Marysville and Barrack St. Terminals; and
  - Cycling/pedestrian facilities
- As well as the consideration of integration with City of Kingston Transit

# Generate Preliminary Design Alternatives

Generate specific preliminary design alternatives for the existing terminals

- Barrack Street;
- Dawson Point; and
- Marysville.



# Issues and Potential Enhancements at each location

- Accommodation for new ferry, including docking/mooring facilities
- Separation, improving efficiencies, and safety for vehicles, pedestrians and cyclists
- Improvements to existing administration and public facilities



# Issues and Potential Enhancements at each location

- Improvements to parking and marshalling facilities
- Improvements to local road connections which are impacted by marshalling and loading
- Miscellaneous issues relating to safety and security, winter operations (bubbler system), lighting, etc.



# Evaluate and Select Preferred Preliminary Design Alternative

- Undertake more detailed analysis on each alternative(engineering and environmental)
- Assess the advantages and disadvantages of each alternative. Factors to be considered include:
  - Socio-Economical
  - Natural
  - Cultural
  - Transportation
  - Cost

# Field Investigations

Field investigations have been occurring since August

- Fisheries
- Terrestrial
- Under Water Archaeology
- Geotechnical
- Others



# Consultation Overview

- **Focused on Obtaining Input from four Groups**
  - Municipal Governments
  - First Nations
  - Government Agencies
  - Public and Interest Groups

# Government and Agency Consultation

- **Municipal Governments**

- Letters
- Municipal Advisory Committee - for technical staff input
  - First meeting held on December 4, 2015
  - Additional meetings to be held around key project milestones
- Meetings and discussions as required
- Council Presentation / Meetings
  - First meeting held March 21, 2016 (today)
  - Additional meetings to be held around key project milestones or as requested

- **First Nations**

- Letters
- Meetings and offline discussions as required
- Council Presentation if requested

- **Other Government Agencies**

- Letters, meetings and discussions as required



# Public Consultation

- **Ontario Government Notices, Letters and Brochures**

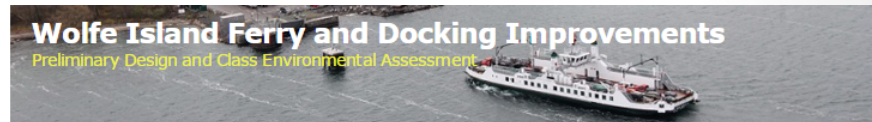
- Study Commencement
- Draft SDR
- Public Information Centres
- Notice of Transportation Environmental Study Report (TESR) Submission

- **Website**

- [www.wolfeislandferryea.ca](http://www.wolfeislandferryea.ca)

- **Twitter**

- @wolfeislandea

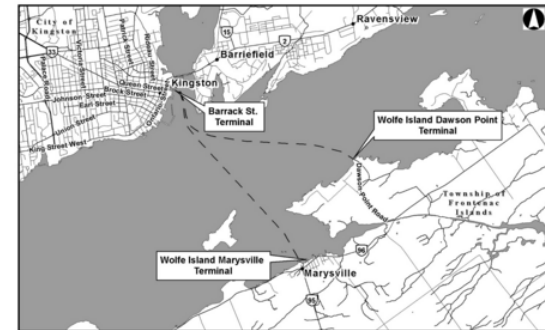


Navigation:

- Home
- Study Overview
- Class EA Process
- Schedule
- Consultation
- Documents
- Photo Gallery
- Links
- Contacts
- FAQ

## Home

The Ministry of Transportation (MTO) has retained Morrison Hershfield Limited to conduct a Preliminary Design and Class Environmental Assessment Study for Wolfe Island Ferry and Docking Improvements. The project is located in the City of Kingston and Township of Frontenac Islands, within the County of Frontenac (see map below).



Click image to enlarge

The project will address short term and long term needs, within the 20 year planning horizon, for the Wolfe Island Ferry and will build on the 2011 Wolfe Island Transportation Planning Study, available [here](#).

The Wolfe Island Transportation Planning Study (2011) was a planning study to identify needs and review solutions within a twenty year time horizon. The study recommended that a second ferry to Wolfe Island be provided to increase capacity for the next 20 years. Beyond 20 years a study should be undertaken to examine the feasibility for a bridge connection.

The Ministry is moving forward with a Preliminary Design and Class Environmental Assessment Study for increasing capacity of the Wolfe Island ferry services via a second ferry, and associated ferry dock / mooring improvements as recommended in the 2011 Planning Study.

Improvements that will be examined at existing terminals, both on and off shore, may include changes to the marshaling areas, larger dock/mooring facilities, improved pedestrian and cycling facilities, including terminal facilities. The existing three terminals are Barrack Street in Kingston, and Dawson Point and Marysville on Wolfe Island. The Ministry will also look at any potential new terminal locations that are available.

# Public Consultation

- **Public Information Centres (PIC)**

- PIC 1 – anticipated late Spring 2016
  - Overview of environmental conditions and constraints;
  - Study background and problem statement for the study; and
  - Full range of design alternatives, any coarse screening, and the proposed approach to evaluate alternatives.
- PIC 2 – anticipated Winter 2017
  - Assessment and evaluation of alternatives;
  - Present the Technically Preferred Alternative, design features and potential impacts;
  - Summary of potential effects and proposed mitigation measures

- **Community Advisory Group – 4 Meetings anticipated**

- Meeting 1 – introduce study and group and discuss elements of the facility that are important to users to assist in generating alternatives (February 25, 2016)
- Meeting 2 – discuss alternatives and obtain input on the criteria (around the time of PIC 1)
- Meeting 3 –input on the evaluation and the selection of a Technically Preferred Alternative (around the time of PIC 2)
- Meeting 4 – input on proposed mitigation and final design features (prior to preparation of final TESR)

- **Additional Consultation**

- Activities (i.e. meetings, field visits, tabletop meeting) with various stakeholders
- Flexible to address the specific issues and/or needs of stakeholders as they arise

**Tentative Schedule for the Preliminary Design and Environmental Study for Wolfe Island Ferry Docking Improvements**  
**G.W.P. No. 4061-14-00**

| PHASE ACTIVITY   | 2015   |      | 2016   |        |        |      | 2017   |        |        |
|--|--------|------|--------|--------|--------|------|--------|--------|--------|
|  | Summer | Fall | Winter | Spring | Summer | Fall | Winter | Spring | Summer |
| <b>Study Commencement</b>                              |        |      |        |        |        |      |        |        |        |
| <b>Study Design</b>                                    |        |      |        |        |        |      |        |        |        |
| Draft Study Design Report                              |        |      |        |        |        |      |        |        |        |
| Data Collection & Field Investigation                  |        |      |        |        |        |      |        |        |        |
| Final Study Design Report                              |        |      |        |        |        |      |        |        |        |
| <b>Generating Design Alternatives</b>                  |        |      |        |        |        |      |        |        |        |
| Generate Design Alternatives                           |        |      |        |        |        |      |        |        |        |
| Assess/Evaluate Alternatives                           |        |      |        |        |        |      |        |        |        |
| Finalize Technically Preferred Alternatives            |        |      |        |        |        |      |        |        |        |
| <b>Preliminary Design</b>                              |        |      |        |        |        |      |        |        |        |
| Prepare Preliminary Design                             |        |      |        |        |        |      |        |        |        |
| Draft Environmental Technical Reports                  |        |      |        |        |        |      |        |        |        |
| Final Environmental Technical Reports                  |        |      |        |        |        |      |        |        |        |
| Develop Environmental Mitigation Measures              |        |      |        |        |        |      |        |        |        |
| <b>Study Completion</b>                                |        |      |        |        |        |      |        |        |        |
| Draft Transportation Environmental Study Report (TESR) |        |      |        |        |        |      |        |        |        |
| Final Transportation Environmental Study Report        |        |      |        |        |        |      |        |        |        |
| 30-Day Mandatory Public Review Period                  |        |      |        |        |        |      |        |        |        |
| <b>Consultation</b>                                    |        |      |        |        |        |      |        |        |        |
| Notice of Commencement/SDR Review/TESR Review          | ①      | ③    |        |        |        |      |        |        | ⑫      |
| Municipal Advisory Committee Meetings (MAC)            |        | ②    |        | ⑤      |        | ⑨    |        |        |        |
| Community Advisory Group Meeting (CAG)                 |        |      | ④      | ⑥      | ⑧      |      | ⑪      |        |        |
| Public Information Centre (PIC)                        |        |      |        | ⑦      |        |      | ⑩      |        |        |

**Legend**

- |   |                     |                     |                                       |
|---|---------------------|---------------------|---------------------------------------|
| ① Notice of Study Commencement                | ④ CAG Meeting No. 1 | ⑦ PIC Round No. 1   | ⑩ PIC Round No. 2                     |
| ② MAC Meeting No. 1                           | ⑤ MAC Meeting No. 2 | ⑧ CAG Meeting No. 3 | ⑪ CAG Meeting No. 4                   |
| ③ Notice of Study Design Report Public Review | ⑥ CAG Meeting No. 2 | ⑨ MAC Meeting No. 3 | ⑫ Notice of TESR Public Review Period |

# Looking Ahead

- The 2<sup>nd</sup> MAC meeting is anticipated to take place this spring
- The 1st PIC is anticipated to take place in late spring, 2016
- The 2<sup>nd</sup> CAG meeting is anticipated to take place shortly after the first PIC



# Questions?

# Municipal Advisory Committee (MAC)

- Comprised of technical staff from all municipalities in the study area.
- Intent of this group is to meet at key milestones to discuss and share information to assist the MTO Study Team in making decisions.

## Meeting #1:

- Introduced the study, discussed the draft Study Design Report, collected study area information and obtained initial comments and feedback
- Technical staff from Township of Frontenac Islands, City of Kingston, and Frontenac County were in attendance

# Community Advisory Group (CAG)

- Intended to be a broad cross-section of the community in order to provide a representative community perspective.
- Made up of a balanced group of people such as village residents, rural residents, seasonal residents, local businesses, tourism businesses, agricultural businesses, recreational interests, etc.

## Meeting # 1:

- Introduced the study and the group and discussed elements of the facility that are important to users.
- 25 CAG members and 9 observers attended the first meeting
- Members were actively involved in workshops and discussions
- Next CAG meeting will be to review revised drawings with the CAG based on the comments received at the first PIC